

EUTOPIA

EUTOPIA_HEALTH

EUTOPIA_HEALTH Calls Information Session

11.02.2025, 11:00 CET



UNIVERSITATEA BABEȘ-BOLYAI
BABES-BOLYAI TUDOMÁNYEGYETEM
BABES-BOLYAI UNIVERSITÄT
BABES-BOLYAI UNIVERSITY
TRADITIO ET EXCELLENTIA



VRIJE
UNIVERSITEIT
BRUSSEL



Ca' Foscari
University
of Venice



CERGY PARIS
UNIVERSITÉ



WARWICK



UNIVERSITY OF
GOTHENBURG



UNIVERZA V LJUBLJANI
University of Ljubljana



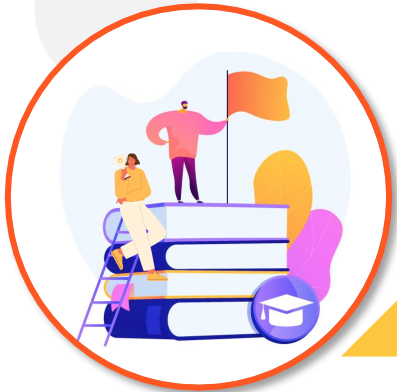
UNIVERSIDADE NOVA
DE LISBOA



Universitat
Pompeu Fabra
Barcelona



Funded by
the European Union



Welcome

**EUTOPIA_HEALTH
Short Presentation**

**EUTOPIA_HEALTH
Cross-University
Mobility
Programme for
Young
Researchers**

**Seed-Funding for
New Clusters of
Health within the
EUTOPIA_HEALTH
Consortium**

Q&A

Welcome



**EUTOPIA_HEALTH
Short Presentation**

**EUTOPIA_HEALTH
Cross-University
Mobility
Programme for
Young
Researchers**

**Seed-Funding for
New Clusters of
Health within the
EUTOPIA_HEALTH
Consortium**

Q&A

eUTOPIA

EUTOPIA_HEALTH

Empowering Widening universities in EUTOPIA_HEALTH consortium to foster academic excellence in Health (GA 101136914)

Project duration: 1 January 2024 – 31 December 2028

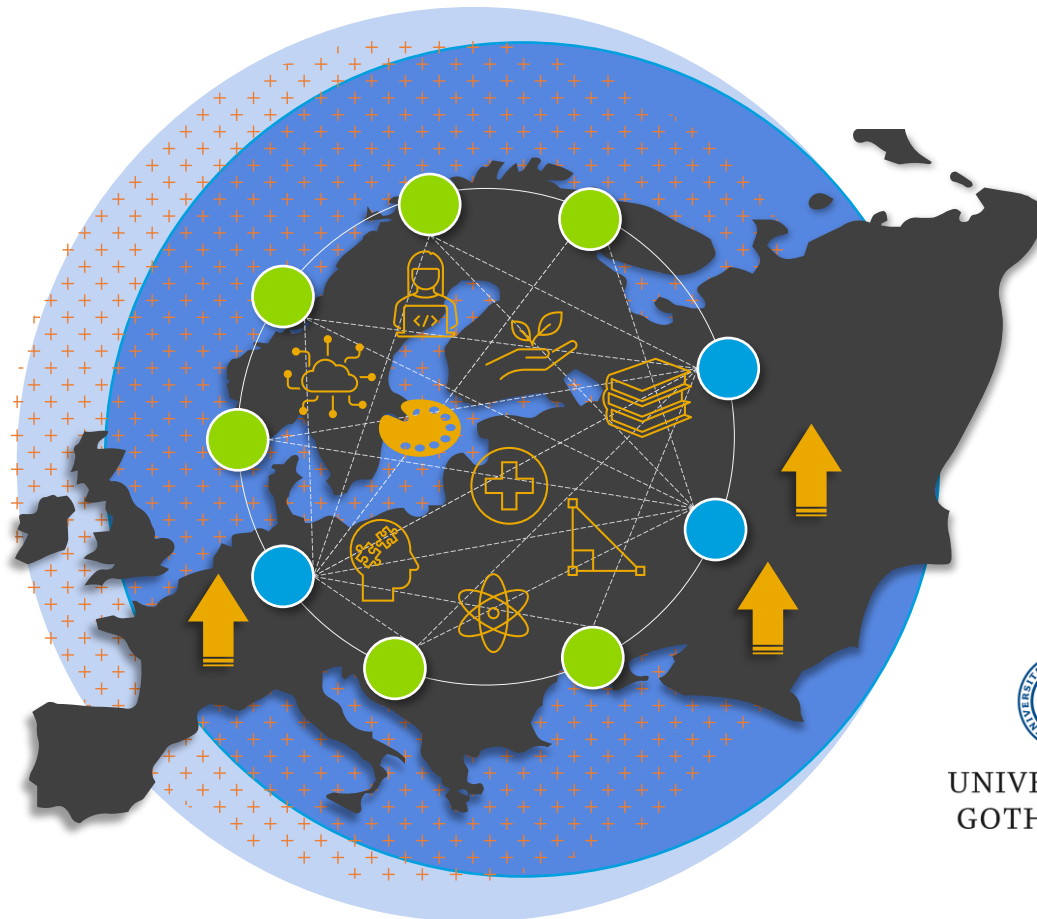
Widening partners



UNIVERSITATEA BABEȘ-BOLYAI
BABEȘ-BOLYAI TUDOMÁNYEGYETEM
BABEȘ-BOLYAI UNIVERSITÄT
BABEȘ-BOLYAI UNIVERSITY
TRADITIO ET EXCELLENTIA



UNIVERZA V LJUBLJANI
University of Ljubljana

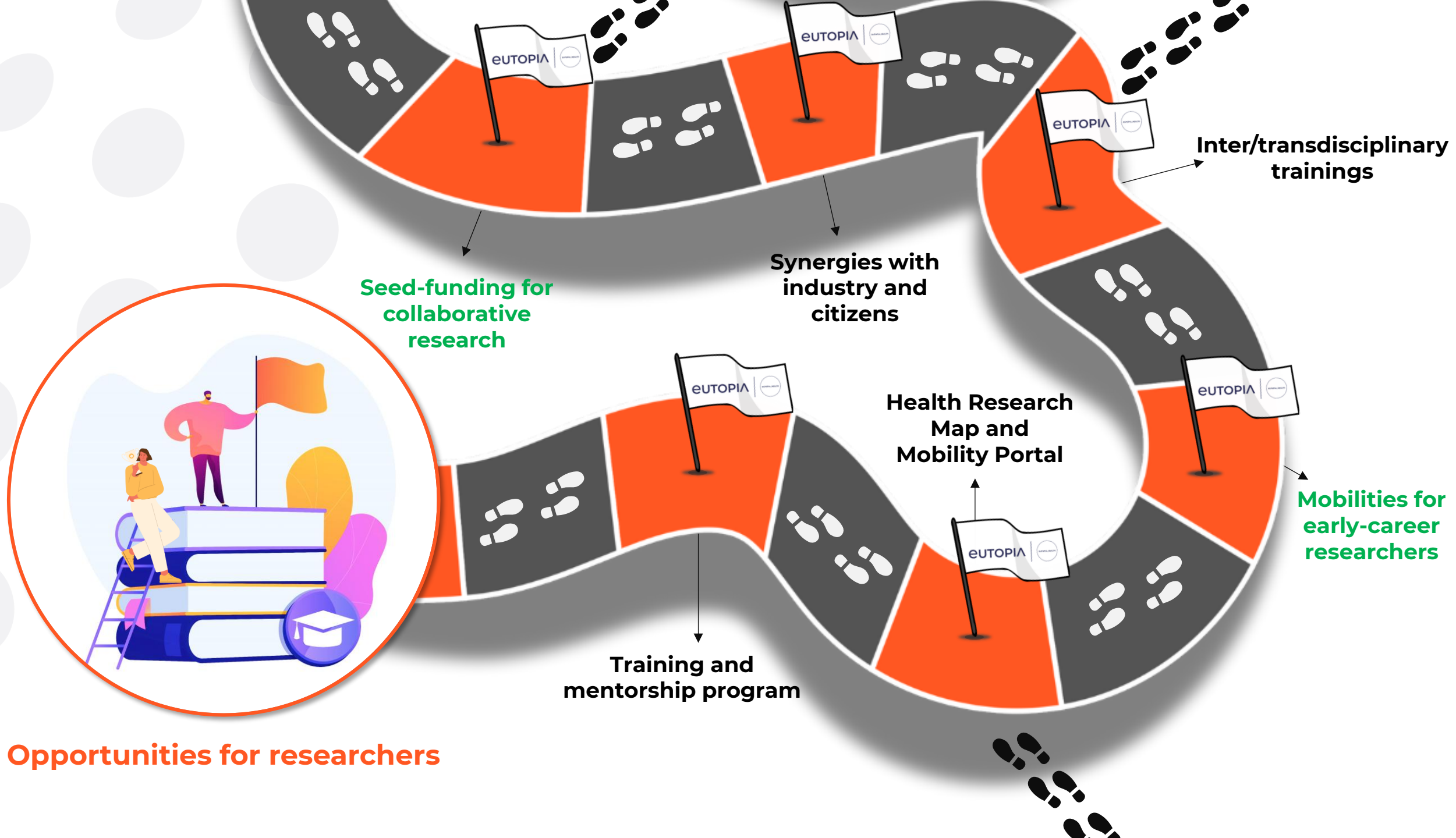


Non-Widening partners



UNIVERSITY OF
GOTHENBURG





Opportunities for researchers

Welcome

**EUTOPIA_HEALTH
Short Presentation**

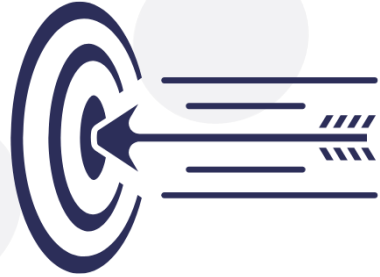


**EUTOPIA_HEALTH
Cross-University
Mobility
Programme for
Young
Researchers**

**Seed-Funding for
New Clusters of
Health within the
EUTOPIA_HEALTH
Consortium**

Q&A

EUTOPIA_HEALTH Cross-University Mobility Programme for Young Researchers



Mentorship from leading researchers within the Consortium and research-oriented mobility collaborations



15 mobility-months/Widening university in 2025



1 month
Max. 5 months



Eligible host institutions for the mobility program include non-Widening Consortium members

EUTOPIA_HEALTH Research Map
(link [here](#))

Who can apply?



- PhD students
- Early-career researchers (<8 years post-PhD)
- Widening universities of the Consortium (UBB, UL, NOVA)



- **Registration in EUTOPIA_HEALTH Research Map (link [here](#))** for both applicant and Host supervisor
- Applicants should demonstrate a track record relevant to their career stage.
- **Postdocs are expected to have at least three publications as main authors in peer-reviewed journals.**
- **Proposals** must focus on **health-related topics.**

How to apply?



- **Application form** (max. 4 pages):
 - Jointly developed with the host collaborator
 - Outlines mobility's objectives, activities, and alignment with the host's research
 - The topic of the proposal should be inter/transdisciplinary
 - Follow the guidelines provided in *Annex 1* – [link here](#)
- **Letter of acceptance from the Host Institution** (1 page) signed by the host collaborator, confirming the institution's ability to provide research conditions and office space.
- **Letter of support from the Home Institution** (1 page) signed by a relevant academic personality from the applicant's home university.



- Applicants may submit only **one application per annual call**, but in case of rejection, they can apply in future calls with a different (or improved) proposal.
- Once funded, a researcher is eligible for only **one mobility opportunity within this programme**.
- **Single-step process submission and evaluation process.**

Evaluation criteria



Panel of experts from the EUTOPIA_HEALTH Widening universities



- **Curriculum vitae and track record**
 - applicant's background and expertise in health-related research
- **Research & Innovation proposal**
 - clarity and relevance of aims and objective
 - originality
 - transdisciplinary approach
 - feasibility of the research plan and methodology
 - alignment with the Host institution's focus
 - *expertise of the host institution's supervisor*

Responsibilities



- regular communication with the host supervisor to foster ongoing collaboration beyond the mobility
- share insights and updates with their home institution during and after the visit, focusing on the research work carried out during the mobility
- for **mobilities > 3 months**, an **interim report** (after three months) and the **final report and presentation (in < 2 weeks after the end of mobility)**
- for **mobilities ≤ 3 months the final report and presentation are requested (in < 2 weeks after the end of mobility)**
- all reports should be signed by the host supervisor

Calendar and contact

Deadline for submission of applications

31 March 2025

Evaluation process

1 April 2025 - 30 April 2025

Start of the mobility

May 2025



Second call will open in 2026



Babeş-Bolyai University - health.eutopia@ubbcluj.ro

University of Ljubljana - eutopia.health@uni-lj.si

NOVA University Lisbon - nova.research@unl.pt



**Seed-Funding for
New Clusters of
Health within the
EUTOPIA_HEALTH
Consortium**

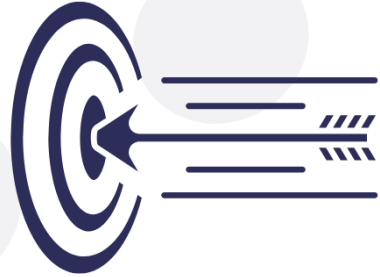
**Cross-University
EUTOPIA_HEALTH
Consortium
Young
Researchers
Mobility Program**

**EUTOPIA_HEALTH
Short Presentation**

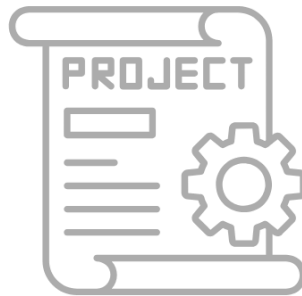
Welcome

Q&A

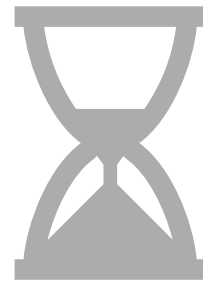
Seed-funding within and for EUTOPIA_HEALTH consortium



Support joint, transdisciplinary Health-related research collaborations within the EUTOPIA_HEALTH Consortium



6 interdisciplinary projects (2 per each Widening university)



24 months



Including indirect costs

Who can apply?




How to build your Research Cluster:

- **Cluster lead**
 - **must be** from a **Widening consortium university**
 - **PhD degree** and **at least four years of post-PhD experience**
 - experience in collaborative research projects is valued
 - **relevant track record in their field, reflecting active engagement in research**

- **Research cluster partners**
 - **at least 3 collaborators from different EUTOPIA_HEALTH consortium universities**
 - collaborations with the EUTOPIA Global Partners or external research groups (outside the Consortium) are also encouraged

- **Registration in EUTOPIA_HEALTH Research Map (link [here](#)) for all Cluster members**



- 
- The **Cluster lead is responsible** for **submitting the proposal and overseeing the project.**
 - Besides the Cluster lead, the Cluster can include:
 - Senior researchers
 - Postdocs
 - PhD students
 - Research support staff from Widening and non-Widening universities of the consortium
 - **Double funding is strictly prohibited.**
 - **Ensure:**
 - trans- and interdisciplinarity within Health-related domains
 - equal opportunities and gender balance for all participants
 - inclusiveness across roles

How to apply?



- **Project proposal:**
 - Part A – Curriculum vitae and track record of the research cluster partners
 - Part B – Scientific proposal
 - Follow the guidelines provided in *Annex 1* – [link here](#)



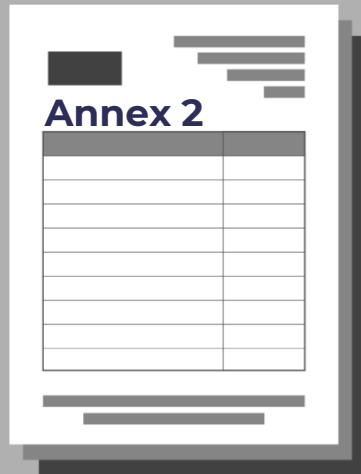
- **The proposal must be completed in English and must be attached to the email submission as one PDF document.**
- **Single-step process submission and evaluation process.**

Responsibilities



- **two annual scientific and financial report** (end of year 1 and 2) - **submitted by the Cluster lead**
- **one scientific publication** in an ISI-indexed peer-reviewed journal **by the end of the project**

Evaluation criteria



Evaluation form – Annex 2 – link [here](#)

Three independent experts from EUTOPIA_HEALTH Consortium

- **Curriculum vitae and track record**
 - Cluster lead and partners' background and expertise in health-related research
- **Research & Innovation proposal**
 - scientific relevance and transdisciplinary nature of the application
 - originality of the aims and objectives
 - capacity of the participants and of the Research cluster
 - work methodology and feasibility of the project
 - impact and dissemination strategy

Calendar and contact

Deadline for submission of applications

30 April 2025

Evaluation process

1 May 2025 - 20 September 2025

Publication of final results

30 September 2025

Start of the project

1 November 2025 -1 February 2026



Babeş-Bolyai University - health.eutopia@ubbcluj.ro

University of Ljubljana - eutopia.health@uni-lj.si

NOVA University Lisbon - nova.research@unl.pt

Make sure you check the links

- [EUTOPIA_HEALTH Cross-University Mobility Programme for Young Researchers](#)
- [EUTOPIA_HEALTH Seed Funding Call](#)
- [EUTOPIA_HEALTH Research Map](#)
- [EUTOPIA_HEALTH webpage](#)

Follow us

- [Facebook](#)
- [Twitter](#)
- [YouTube](#)
- [LinkedIn](#)
- [Instagram](#)
- [EUTOPIA News](#)
- [EUTOPIA Newsletter](#)

eUTOPIA



Welcome

**EUTOPIA_HEALTH
Short Presentation**

**Cross-University
EUTOPIA_HEALTH
Consortium
Young
Researchers
Mobility Program**

**Seed-Funding for
New Clusters of
Health within the
EUTOPIA_HEALTH
Consortium**

Q&A

