

FLECSLAB stands for “Flexible Learning Communities Supporting Lifelong Learning Across Borders” and is an Erasmus+ project developed within EUTOPIA.

The FLECSLAB project is a response to the European Commission’s ambitions by developing flexible mechanisms that recognise short-term intensive learning efforts in a transnational context.

The distinctiveness of FLECSLAB’s approach is its use of the European University Alliance as the driving force for integrating an innovative lifelong learning package into the existing curriculum of the partner universities.

The project aims to ensure coherence between

- the learner’s needs,
- the educational approach and
- the organisational capacity that will enable higher education institutions to develop a sustainable lifelong learning business model.

We have produced resources to help higher education practitioners and policymakers develop:

- lifelong learning pedagogy (Lifelong Learning Toolbox)
- sustainable provision (Lifelong Learning Business Model)

EUTOPIA

Supporting Lifelong Learning Across Borders FLECSLAB

Visit the FLECSLAB website for more information:

<https://eutopia-university.eu/>

<https://observe360.eu>

E-mail: tomaz.dezelan@fdv.uni-lj.si

Follow us:     



FLECSLAB Road map

Lifelong Learning Toolbox

12 EUTOPIA Connected Learning Communities tested for the lifelong learning potential

Portfolio of lifelong learning formats relating to diverse disciplinary fields and sectors documented, supported with feedback and guidelines from a committee of experts in adult learning

The Lifelong Learning Toolbox for institutions open to non-modal learners with guidelines for academics and public sector partners

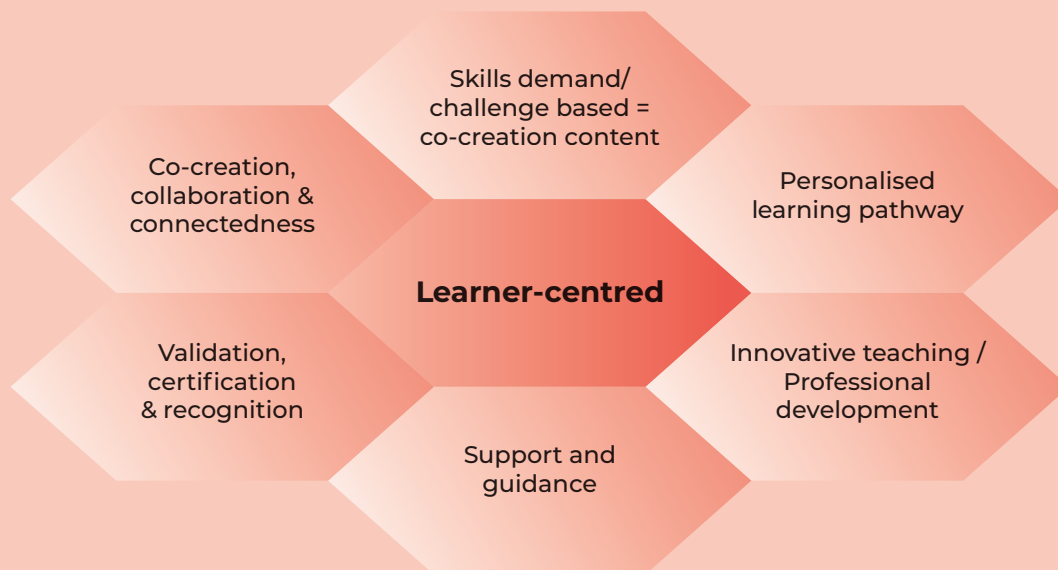
Lifelong Learning Business Model

Identification of barriers and enablers for maintaining LLL capacity

Lifelong Learning Business model developed as an organisational tool for EUTOPIA Connected Learning communities and other agents

Three learning eco-systems identified:
 1. Regulated (highly structured)
 2. Semi-structured
 3. Low structured

Framework with dimensions underlying the transformation of higher education institutions into lifelong learning institutions



Lifelong Learning Business Model – Lifelong learning ecosystems with ten steps

Level of structure

Low structured

Semi-structured

Regulated – highly structured

